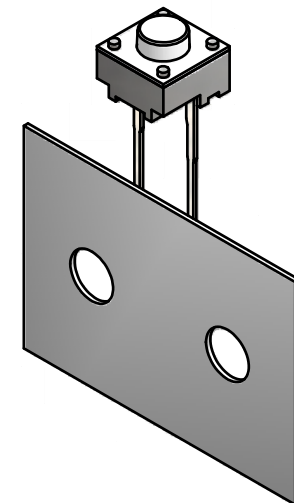
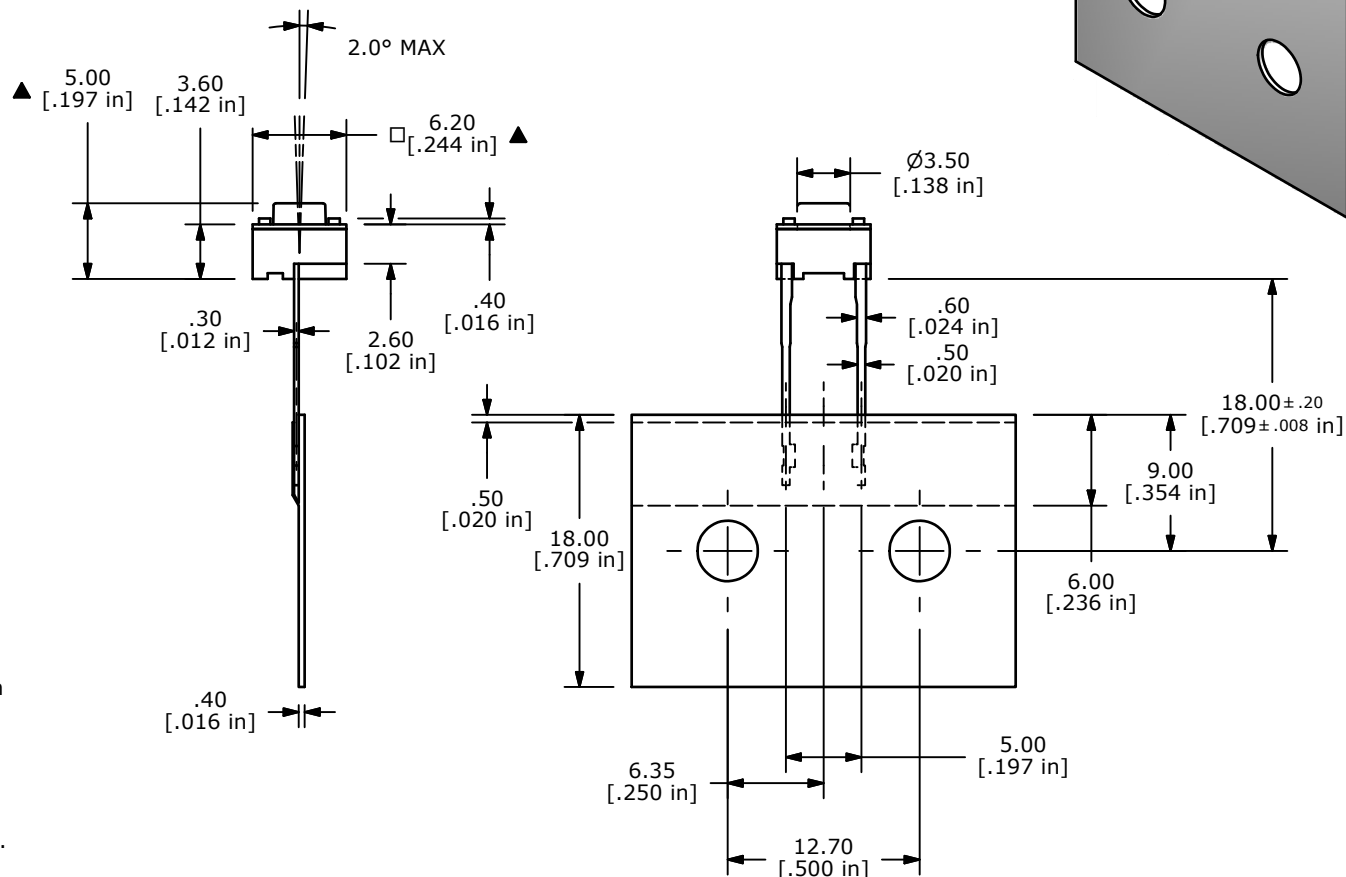


- NOTES:
1. ALL DIMENSIONS IN MM [INCH]
 2. GENERAL TOLERANCE: X.X \pm 0.4mm
X.XX \pm 0.25mm
 3. CONTACT RATING: 50mA @ 12VDC
 - ▲ 4. CONTACT MATERIAL: SILVER
 - ▲ 5. OPERATING FORCE: 520 \pm 100gf
 6. TRAVEL: 0.25 +0.2/-0.1mm
 7. CONTACT RESISTANCE: 100m Ω MAX.
 8. ELECTRICAL LIFE: 100,000 CYCLES
 9. PACKAGING: 1,000 PCS RADIAL
 10. 2002/95/EC (ROHS) COMPLIANT
 11. ▲ DENOTES CRITICAL PRAMETERS.



TITLE TL59AF520Q				
SCALE	DATE	DR	DWG	REV
2:1	4/6/2011	BGL	P010660	A

A	19812	RELEASED FOR PRODUCTION	4/06/11	BGL
REV	PCR NO	DESCRIPTION	DATE	BY
<small>THE INFORMATION CONTAINED IN THIS DOCUMENT IS PROPRIETARY TO E-SWITCH AND IS NOT TO BE COPIED OR TRANSFERRED</small>				